

WEST INFORMATIK AG

InfoZone User Handbook

© 2008, West Informatik AG
Poststrasse 14 • 8564 Lipperswil
Switzerland
Email info@westinformatik.ch
URL www.westinformatik.ch

Table of contents

Before you start	1
Installing the InfoZone SWIFT Viewer	1
Starting up InfoZone	2
Loading SWIFT files	3
Show Messages within the Swift View	4
Different levels of message presentation	6
Find a Value	7
Message Filter	8
Reload a Message File	8
Show Error/Warning ...	8
Show Original Message ...	11
Show Message Format ...	11
Print Grid	11
Print Single Message	11
Export Data	11
Toggle View Mode	11
Format View	13
Application Setup	14
Parameter Setup Dialog	14
File Path	18
Extra Rule Files	18
Matching Rules	18
Color Setup Dialog	19
Help Menu	19
About InfoZone	20
Supported Message Types	21
User Handbook	21
License Key	22
Application Support	22

Installation

Before you start

Check that your system configuration meets the following requirements.

Operating System: Windows 2000, XP or Vista.

Hard disk free space: At least 50 MB

If you have downloaded the installation zip-file you must first unzip the installation files to a temporary directory.

Installing the InfoZone SWIFT Viewer

❶

Insert the CD-ROM into the computer's drive and start the installation program **setup.exe** or Run the **setup.exe** from the temporary directory if you download the zip-file from our web page.

❷

Startup window will appear and you will be guided through the installation process.



After the installation the program may be started from the start menu *Programs*.

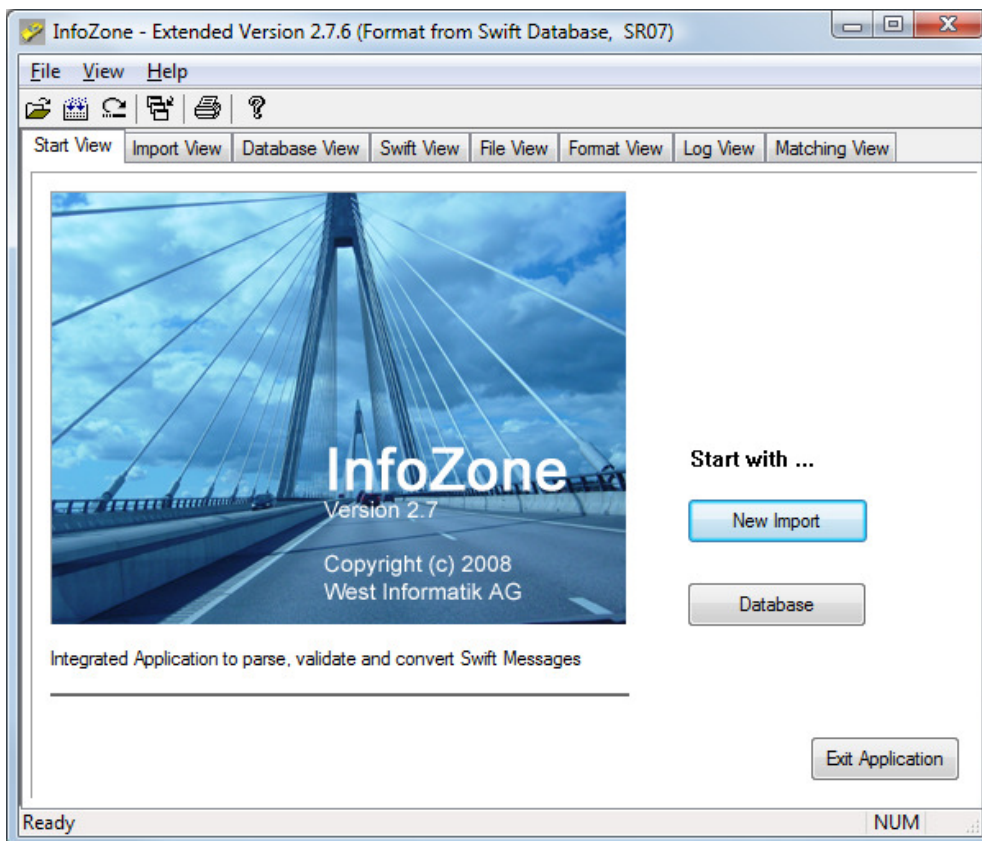
Using InfoZone

InfoZone is a powerful SWIFT parser and viewer. InfoZone supports nearly the whole current SWIFT message library (ISO7775, ISO11521 and ISO15022) - that means 186 different message types!

Only a few mouse clicks and the application will present you the SWIFT messages in an intuitive way. You can place files with Drag & Drop to start parsing at any time.

Starting up InfoZone

Click the Start button in the task bar to display the Start menu. Select “Programs” and select “InfoZone”. Click “InfoZone” to start the program.



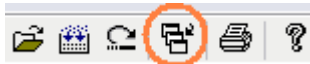
First you will see the start dialog with the logo and the version information. From here you can start to

- Load SWIFT files
- View and change the application setup
- Open the “About InfoZone” dialog
- Show the supported message types under Help/Supported Message types
- Manage the license key

Loading SWIFT files

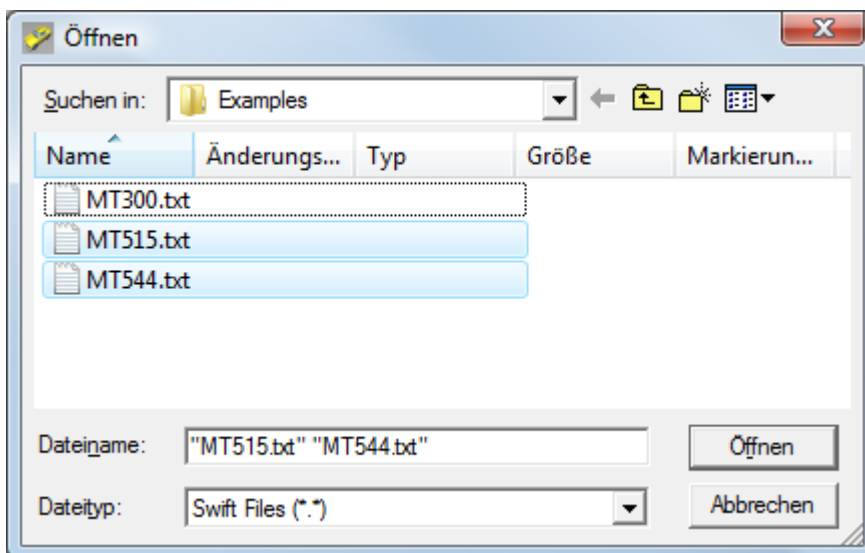
You have different possibilities to select SWIFT files

- Use button “New Import” from the Start View.
- Use button “Select File(s)” from the Input View.
- Use right mouse button within the Input View and click “Select File(s)”.
- Use Drag & Drop to place one or more files to Start View, Input View or Swift View. Drag & Drop automatically starts the parsing process for the files selected and shows the messages from the first file within the Swift View.
- Paste one or more messages from the clipboard by using the tool



. Pasting messages automatically starts the parsing process and shows the message(s) within the Swift View.

The application can handle different message types within the same file. When parsing a file it skips all data not belonging to a SWIFT message. Preceding loaded files will be cleared from the application view.

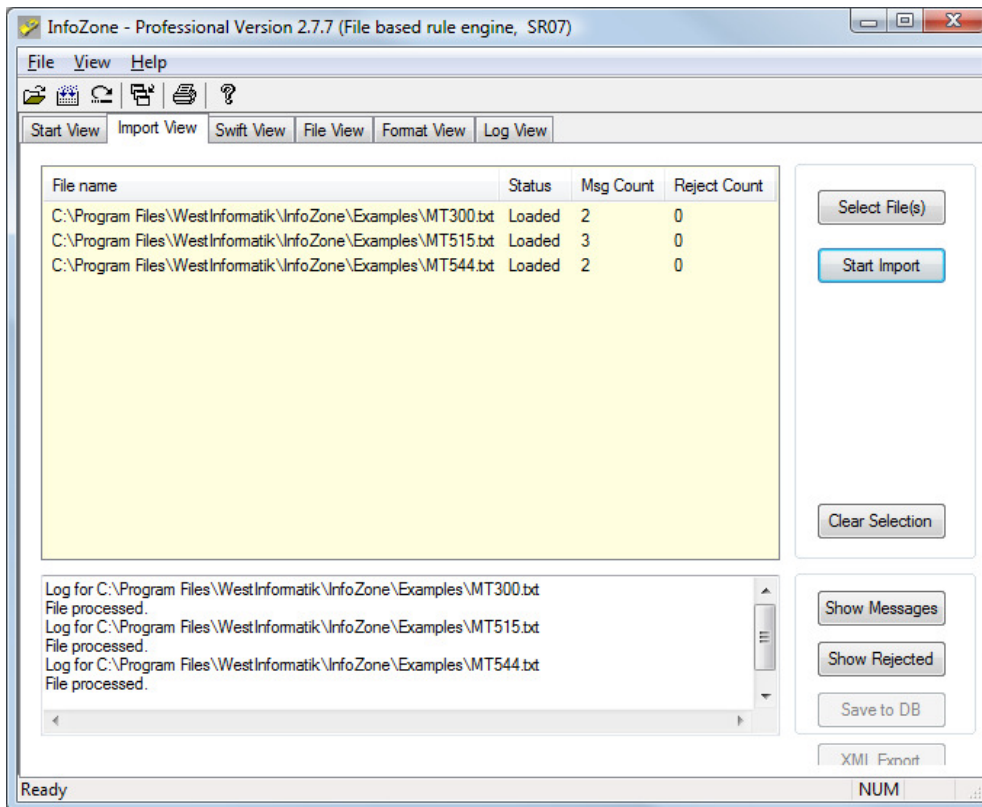


After selecting the files they are listed in the Import View with status ‘Ready to Load’. Clicking the button “Start Import” or by double clicking an entry in the list the import process starts.

The parsing process uses the rule files to fractionalize the file(s) and to check for a correct SWIFT syntax. The rules are based on the SWIFT user handbook from which they are automatically generated by a Rule Generator.

USING INFO ZONE

If there is a problem within a SWIFT message the application generates an error message and increments the counter in the column “Reject Count”. To see the detailed error message together with the original message check within the chapter “Display Error Messages” on how to show them in the File View.



After the parsing process is completed you can show the messages within the Swift View by

- Selecting a file with a mouse click and the button “Show Messages”. **Remark:** If no file is selected the application views the messages from the first file.
- Double click a list entry will automatically change to Swift View and show the messages from the selected file.

To clear files from the import list use the button “Clear Selection” or select another set of files.

Show Messages within the Swift View

Please read the previous chapter on how to select a file and display the message within the Swift View.

The Swift View shows the message data within a tree grid.

Within the standard display mode you will see five columns

USING INFO ZONE

Message number with the number on the parent line

Description with data description

Tag with SWIFT tag

Qualifier SWIFT qualifier

Value with formatted data

Num	Description	Tag	Qualifier	Value
1	MT544 (Receive Free Confirmation)			
	Mandatory Sequence A General Information			GENL
	Senders Message Reference	20C	SEME	M098765432109876
	Function of the Message	23G		NEWM
	Preparation Date/Time	98C	PREP	17.06.2004 11:04:39
	Mandatory Repetitive Subsequence A1 Linkages			LINK
	Related Message Reference	20C	RELA	9955765432109876
	Mandatory Sequence B Trade Details			TRADEDET
	Place of Trade	94B	TRAD	EXCH XSWX
	Trade Date/Time	98A	TRAD	10.06.2004
	Effective Settlement Date/Time	98A	ESET	17.06.2004
	Identification of the Financial Instrument	35B		
	Identification of the Financial Instrument			ISIN CH0012607195
	Identification of the Financial Instrument			LOGITECH INTL R...
	Mandatory Repetitive Subsequence C Financial Instrument/Account			FIAC
	Quantity of Financial Instrument Settled	36B	ESTI	UNIT 4'750.0
	Safekeeping Account	97A	SAFE	12345670078209YY
	Mandatory Sequence E Settlement Details			SETDET
	Type of Settlement Transaction Indicator	22F	SETR	TRAD
	Mandatory Repetitive Subsequence E1 Settlement Parties			SETPARTY
	Delivering Agent	95P	DEAG	ABSWCHZH
	Mandatory Repetitive Subsequence E1 Settlement Parties			SETPARTY
	Seller	95P	SELL	RDDSUS3CXXX
	Safekeeping Account	97A	SAFE	12345670021084U4
	Optional Repetitive Subsequence E3 Amount			AMT
	Trade Amount	19A	DEAL	CHF 0.0
2	MT544 (Receive Free Confirmation)			
	Mandatory Sequence A General Information			GENL
	Senders Message Reference	20C	SEME	M098765432109877

Underlined words within the column “Qualifier” or “Value” are SWIFT codes. The code description can be displayed by clicking the word.

	Senders Message Reference	20C	SEME	M098765432109876
	Function of the Message	23G		NEWM
	Preparation Date/Time	98C	PREP	17.06.2004 11:04:39
	Mandatory Repetitive Subsequence A1 Linkages			
	Related Message Reference			432109876
	Mandatory Sequence B Trade Details			TRADEDET

Code word 'NEWM'

This is a new advice/instruction.

USING INFO ZONE

Different levels of message presentation

Show Level 1
Show Level 2
Show Level 3
Show all Details
Find...
Message Filter...
Reload File
Show Error/Warning...
Show Original Message...
Show Message Format...
Print Grid
Export Data
Toggle View Mode
Close Menue

SWIFT messages are composed of tags, sequences and subsequences. To show a certain sequence level you use the right mouse button and select one of the display levels “Show Level 1...3” or “Show all Details”. According to your defined level the grid will be refreshed showing the defined level for all messages.

This shows the Swift View grid with a level of 3.

InfoZone - Professional Version 2.7.7 (File based rule engine, SR07)				
File View Help				
Start View Import View Swift View File View Format View Log View				
Num	Description	Tag	Qualifier	Value
2	MT515 (Client Confirmation of Purchase or Sale)			
	[-] Mandatory Sequence A General Information			GENL
	Senders Message Reference	20C	SEME	Z004077IP1820244
	Function of the Message	23G		NEWM
	Preparation Date/Time	98C	PREP	17.03.2004 19:14:06
	Trade Transaction Type	22F	TRTR	TRAD
	[+] Mandatory Repetitive Subsequence A1 Linkages			LINK
	[-] Mandatory Sequence C Confirmation Details			CONFDET
	Trade Date/Time	98A	TRAD	17.03.2004
	Settlement Date/Time	98A	SETT	22.03.2004
	Deal Price	90B	DEAL	ACTU JPY 1'147.57
	Buy/Sell Indicator	22H	BUSE	BUYI
	Payment Indicator	22H	PAYM	APMT
	[+] Mandatory Repetitive Subsequence C1 Confirmation Parties			CONFPRTY
	Quantity of Financial Instrument Confirmed	36B	CONF	UNIT 2'400.0
	[+] Identification of the Financial Instrument	35B		
	[+] Optional Subsequence C2 Financial Instrument Attributes			FIA
	[-] Optional Sequence D Settlement Details			SETDET
	Type of Settlement Transaction Indicator	22F	SETR	TRAD
	[+] Optional Repetitive Subsequence D1 Settlement Parties			SETPRTY
	[+] Optional Repetitive Subsequence D1 Settlement Parties			SETPRTY
	[+] Optional Repetitive Subsequence D2 Cash Parties			CSHPRTY
	[+] Optional Repetitive Subsequence D3 Amounts			AMT
	[+] Optional Repetitive Subsequence D3 Amounts			AMT

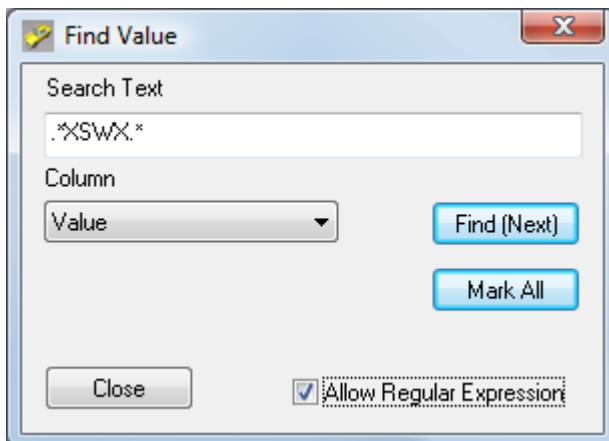
USING INFO ZONE

To show all details you double click the master line (the line with a message number within the column 'Num'). To collapse a message tree double click the master line again.

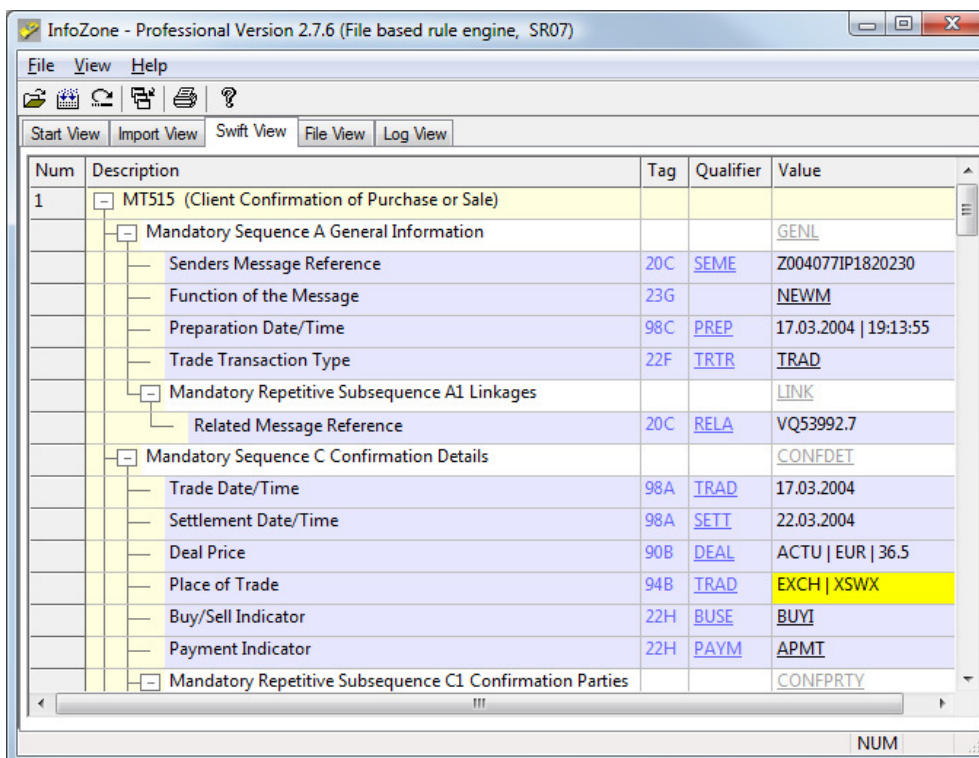
The same way you may expand and collapse sub trees. The other way is to use the - and + sign within the column "Content".

Find a Value

The command "Find ..." will find and mark a value or a sub string within the tree grid. You will see this pop up dialog.



Fill in the text you are looking for and use the button "Find (Next)" to select the first occurrence of the text within the grid. It doesn't matter whether a data item is shown in an expanded tree or is hidden within a collapsed tree. If a string matches the tree will be expanded and this value is highlighted in yellow color.

A screenshot of the 'InfoZone - Professional Version 2.7.6' application window. The window has a menu bar (File, View, Help) and a toolbar with icons for file operations. Below the toolbar are tabs for 'Start View', 'Import View', 'Swift View', 'File View', and 'Log View'. The main area displays a tree grid with columns: Num, Description, Tag, Qualifier, and Value. The tree is expanded to show details for message 1 (MT515). The 'Place of Trade' row is highlighted in yellow, showing the value 'EXCH | XSWX'.

Num	Description	Tag	Qualifier	Value
1	MT515 (Client Confirmation of Purchase or Sale)			
	[-] Mandatory Sequence A General Information			GENL
	Senders Message Reference	20C	SEME	Z004077IP1820230
	Function of the Message	23G		NEWM
	Preparation Date/Time	98C	PREP	17.03.2004 19:13:55
	Trade Transaction Type	22F	TRTR	TRAD
	[-] Mandatory Repetitive Subsequence A1 Linkages			LINK
	Related Message Reference	20C	RELA	VQ53992.7
	[-] Mandatory Sequence C Confirmation Details			CONFDET
	Trade Date/Time	98A	TRAD	17.03.2004
	Settlement Date/Time	98A	SETT	22.03.2004
	Deal Price	90B	DEAL	ACTU EUR 36.5
	Place of Trade	94B	TRAD	EXCH XSWX
	Buy/Sell Indicator	22H	BUSE	BUYI
	Payment Indicator	22H	PAYM	APMT
	[-] Mandatory Repetitive Subsequence C1 Confirmation Parties			CONFPTY

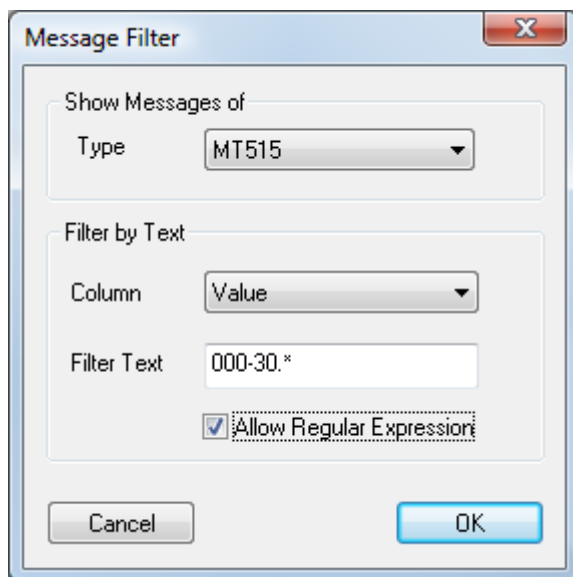
USING INFO ZONE

As soon as you close the find dialog the yellow highlight will disappear. The find dialog is not modal, means you can select the application main window and keep the find dialog open. This is important if you work with the “Mark All” command. This command marks all the matched text within the grid. Use the scroll bar to see all marked text.

Use the check box “Regular Expressions” to define whether you work with regular expressions to define the search pattern. **Example:** To find a sub-string within another string define a regular expression like that `.*searchtext.*` where *searchtext* is the placeholder for the text you are looking for. You will find more details to this matter on the internet using the key words *regular expression* on a search engine.

Message Filter

Message Filter reduces the amount of information displayed in the grid. Text filter will not be used if field *Filter Text* is empty. Message Filter can also be used to select one specific message and print them separately.



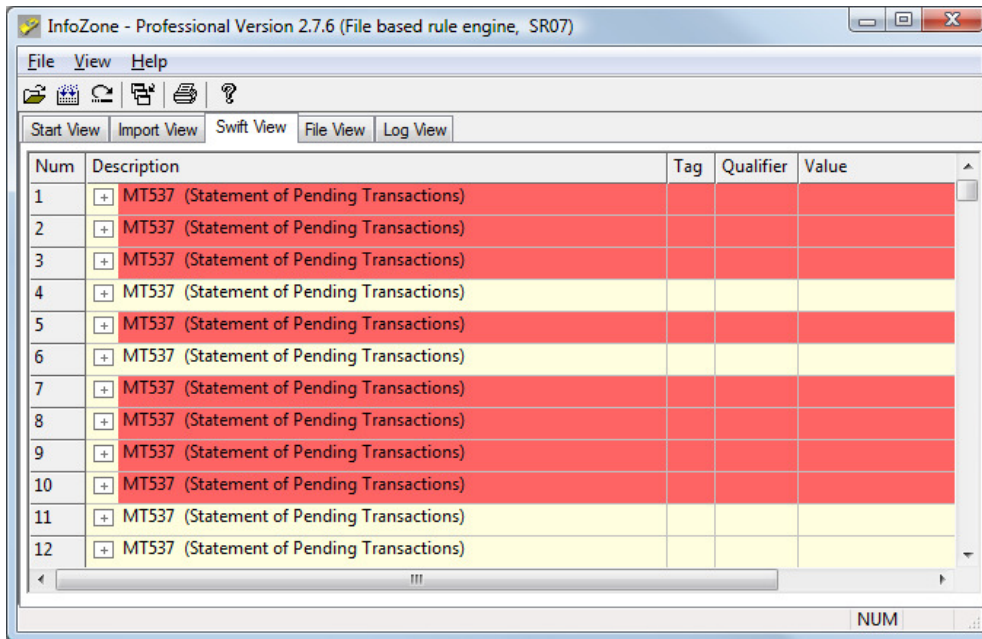
Reload a Message File

To facilitate the task of manually write and debug a SWIFT file the command “Reload File” reloads and re-parses the file from the original path. Using this functionality you can edit the SWIFT file with a text editor and reload the modified file.

Show Error/Warning ...

The SWIFT parser may find one or more syntax error(s) within a message file. If a message contains a syntax error then the messages master line will be highlighted in red color.

USING INFO ZONE



To see the detailed error message within the original message text use the right mouse button pointing on the message master line and select the command “Show Error/Warnings ...”.

Lines containing an error are shown in red color within the File View. The text in blue explains the error and lists the expected tag's and formats. If you are not familiar with this format description we recommend you to have a close look at the chapter “Format Specification” within the SWIFT user handbook.

This is a list of the main elements

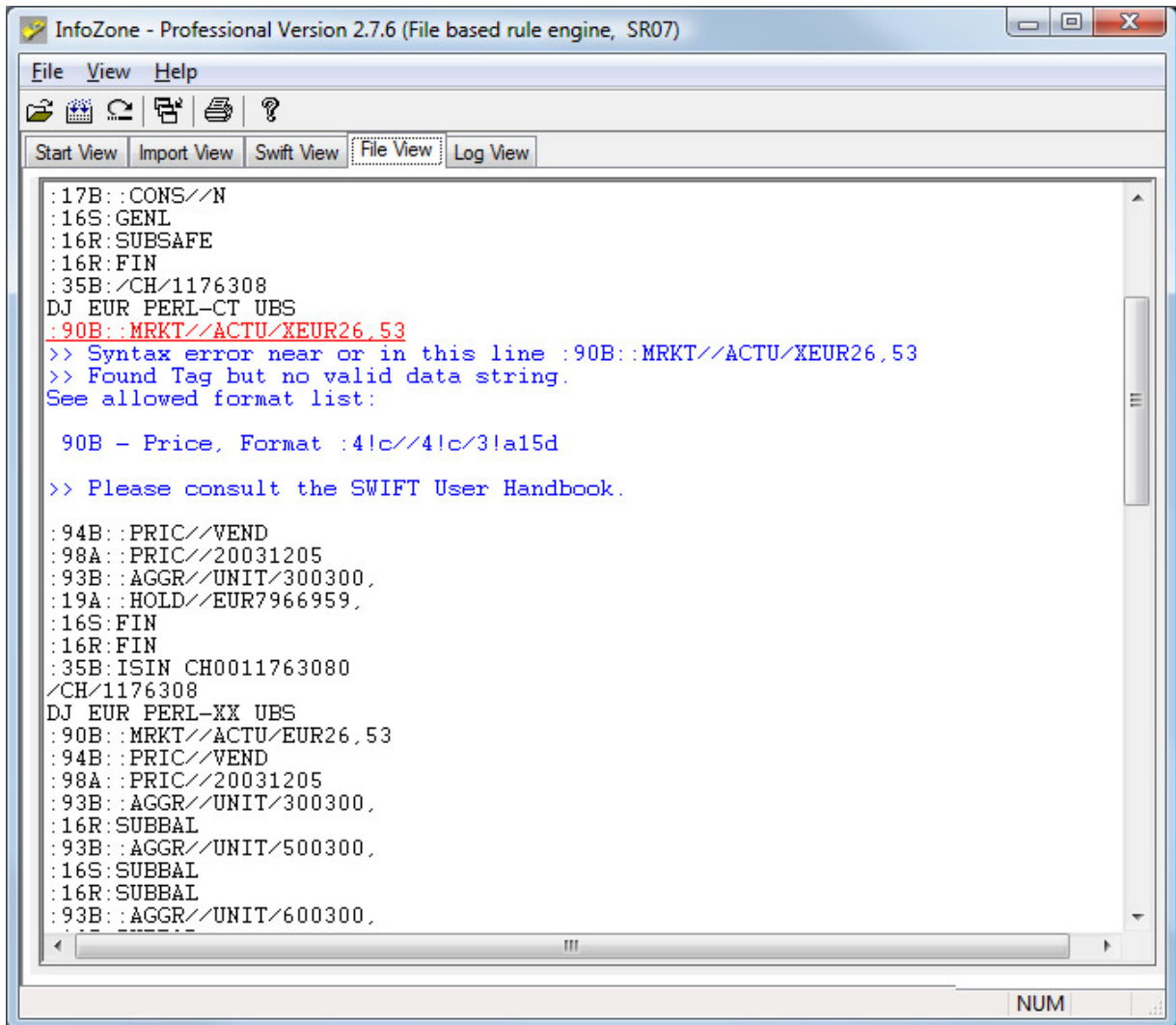
Length restriction	nn	Maximum length
	nn! (*)	Fixed length
	nn-nn	Minimum and maximum length
	nn * nn	Maximum number of lines times maximum line length
Type of character	n	Digits
	d (*)	Digits with decimal comma
	a	Uppercase letters
	c (*)	Uppercase alphanumerics
	e (*)	Space
	x	SWIFT character set
	y	Upper case level A ISO 9735 characters
	z	SWIFT extended character set

USING INFO ZONE

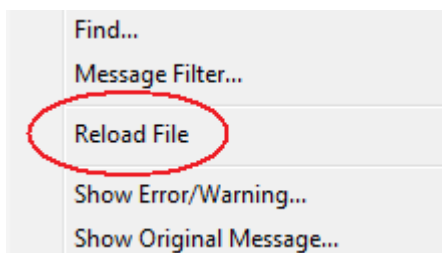
Optional element Identifier [...]

Where ... represents any of the allowed combinations length/character

This is an example of an error where data format 3!a 'currency' is incorrect.



Hint: Use 'Reload File' within Swift View or File View to debug (validate) SWIFT messages after updating a loaded file with an editor. The file will be loaded and validated again.



USING INFO ZONE

Show Original Message ...

This command on the Swift View pop up menu jumps direct into the File View showing the selected message starting with the Basic Header Block on the top line.

Show Message Format ...

This command on the Swift View pop up menu jumps direct into the Format View. It uses the selected message type and shows the expected message format with field details and qualifiers (Please see description Message View).

Print Grid

This menu item allows you to print the grid content. The grid will be printed in the way it is shown in the application. This is also true for expanded and collapsed tree elements.

Print Single Message

Use the command 'Message Filter...' to narrow the list down. Use 'Filter by Text' and select from list 'Column' value 'Message Number'. Enter the 'Message Number' (taken from column 'Num') into edit field 'Filter Text' and click OK.

Now use the command 'Print Grid' to get a printout from this message.

Export Data

This command exports the shown grid data to a csv file.

Toggle View Mode

Use the command "Toggle View Mode" to toggle between the Compact and Standard Mode. InfoZone allows you to display messages in one of three modes - *Compact*, *Standard* or *Extended*

Compact View Mode

This mode is used to display as many information as possible on one line. Multiple attributes within the column "Value" are separated by a '|' character.

1	MT507 (Collateral Status and Processing Advice)			
	Mandatory Sequence A General Information			
	Senders Reference	20C	SEME	OCT312000/ABC-1
	Senders Collateral Transaction Reference	20C	SCTR	BA-IR-123
	Receivers Collateral Transaction Reference	20C	RCTR	IR583-10
	Function of the Message	23G		INST

USING INFO ZONE

Standard View Mode

This mode is used to present a message ‘Swift-Tag’ oriented. Each attribute is shown on a separate data row.

	GENL	Mandatory Sequence A General Information	Mandatory Sequence A General Information
	20C	Senders Reference	
		OCT312000/ABC-1	
	20C	Senders Collateral Transaction Reference	
		BA-IR-123	
	20C	Receivers Collateral Transaction Reference	
		IR583-10	
	23G	Function of the Message	
		INST	

Extended View Mode

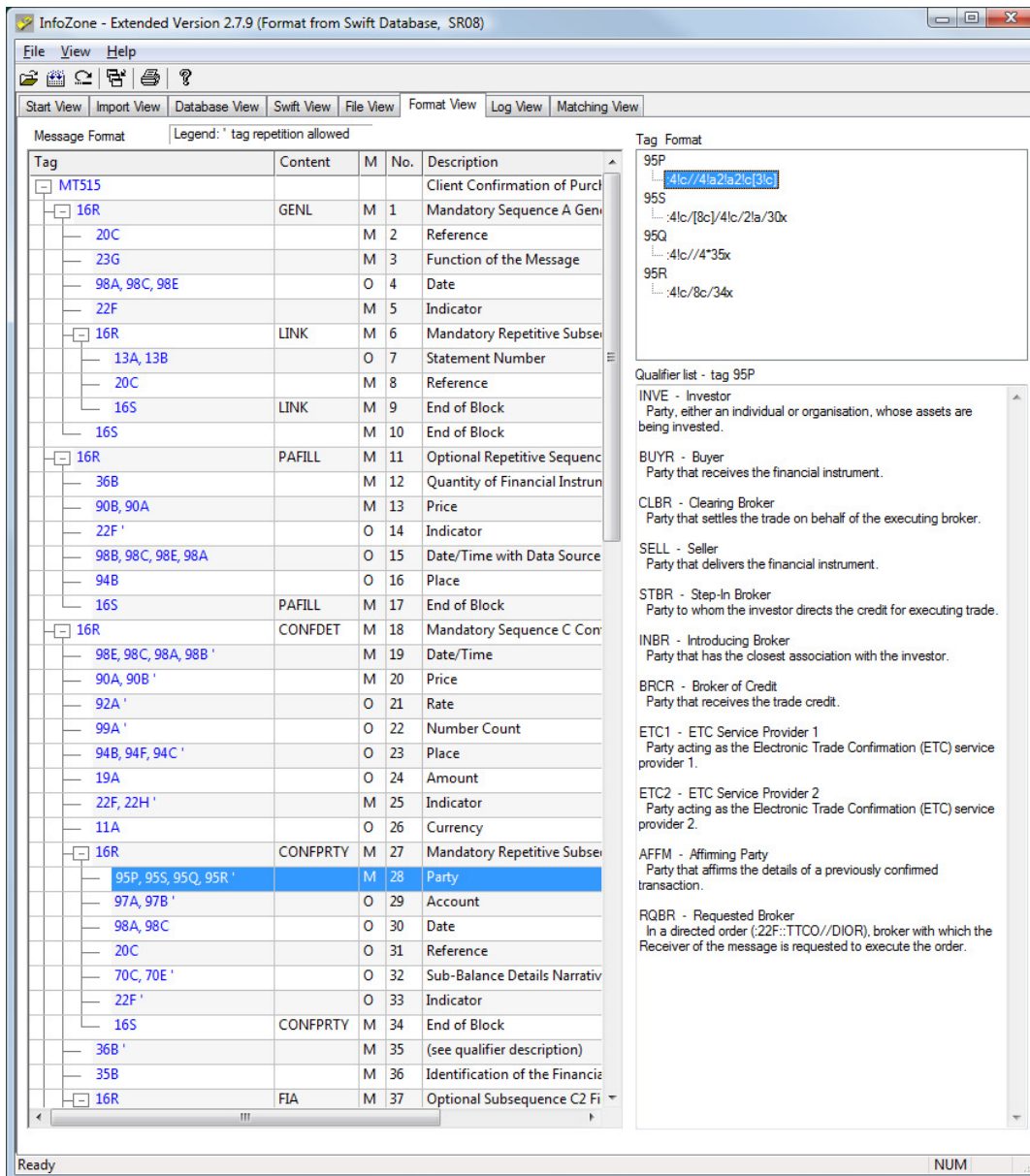
This mode allows you to see the complete swift line for every tag and a short and long description. The attributes from the decomposed swift line is a shown in separate rows showing name and data types. Remark: This mode must be activated via the command “File/Application Setup/Show in Extended Mode”.

	GENL	Mandatory Sequence A General Information	Mandatory Sequence A General Information
	20C	:SEME//OCT312000/ABC-1	Senders Reference
		OCT312000/ABC-1	Reference number assigned by the Sender to unambiguously identify the message.
	20C	:SCTR//BA-IR-123	Senders Collateral Transaction Reference
		BA-IR-123	Unique reference identifying the collateral management transaction from the Senders point of view.
	20C	:ACTR//IR583-10	Receivers Collateral Transaction Reference
		IR583-10	Unique reference identifying the collateral management transaction from the Receivers point of view.
	23G	INST	Function of the Message
		INST	String

USING INFO ZONE

Format View

This tab shows the selected message structure with field formats and qualifiers. Select one of the shown tags to see the field format and a list of allowed qualifiers. Use context menu to select a new message type.



A ' at the end of a tag list indicates that multiple usage (repetition) is allowed.

Column 'M' indicates whether this tag is mandatory (M) or optional (O). If an optional sequence is used this column indicates the expected tags.

It is possible to open Format View direct from the Swift View by the context menu 'Show Message Format ...'.

Application Setup

On the application main menu 'File' select 'Application Setup' to display the setup dialog.

Parameter Setup Dialog

Check for SWIFT Character Set

If this check box is active all SWIFT messages are checked against the SWIFT character set. In case of a violation, a syntax error is generated.

Ignore qualifier order errors

If this check box is active the parser checks the qualifier order. This is the case if a tag allows multiple qualifiers within a SWIFT message. If the ordering is violated a syntax error is generated.

Show Warnings

It is possible that a SWIFT message has a syntax error if a strict check is done. The Extra Rule File allows user specific exceptions to the SWIFT syntax (for example a different format). In this case the parser accepts the message and generates a warning.

USING INFO ZONE

Check Length of Number Fields

If this check box is active all number fields are checked against maximum length allowed.

Check Currency Codes

If this check box is active currency codes are checked against defined currency codes.

Check Decimal Places

If this check box is active decimal places within a currency amount are checked against maximum length allowed.

Remove Message Wrapper

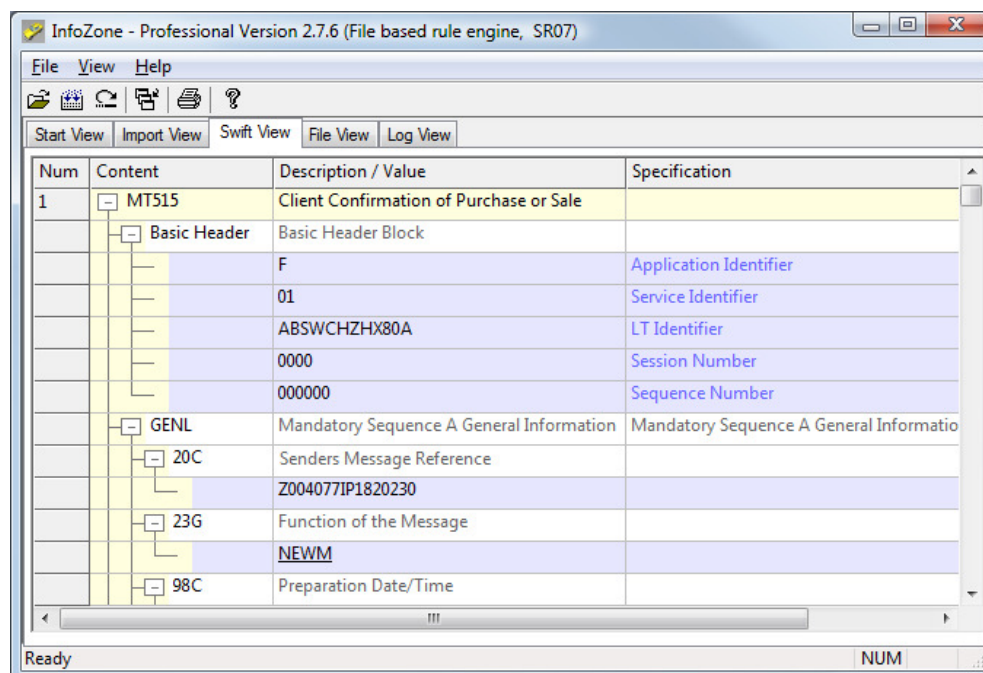
In cases where messages are placed within MTx98 this check box allows an automatic unpack of such messages.

Show in Compact, Standard or Extended Mode

This defines the amount of data shown within the Swift View Data Grid. Please have a look to the command description “Toggle View Mode” within the previous Chapter.

Show Basic Header Block

If active - Basic Header Block is shown within Swift View.



Num	Content	Description / Value	Specification
1	MT515	Client Confirmation of Purchase or Sale	
	Basic Header	Basic Header Block	
		F	Application Identifier
		01	Service Identifier
		ABSWCHZX80A	LT Identifier
		0000	Session Number
		000000	Sequence Number
	GENL	Mandatory Sequence A General Information	Mandatory Sequence A General Information
	20C	Senders Message Reference	
		Z004077IP1820230	
	23G	Function of the Message	
		NEWM	
	98C	Preparation Date/Time	

USING INFO ZONE

Show Application Header Block

If active - Application Header Block is shown within Swift View.

Show User Header Block

If active - User Header Block is shown within Swift View.

Show Trailer Block

If active - Trailer Block is shown within Swift View.

Show Data in Compact Mode

If this check box is active the Swift View shows the data in straight forward compact mode. To show the whole line that belongs to a certain tag deactivate this check box. The standard to display a SWIFT message is Compact Mode.

Attribute Separator

This character or character sequence is used to separate attributes shown in Swift View using Compact Mode.

Function of the Message	23G		NEWM
Preparation Date/Time	98C	PREP	17.03.2014 14:13:55
Trade Transaction Type	22F	TRTR	TRAD

Default Display Level

Use the drop down list to select the standard level when messages are shown within the Swift View. Level 4 shows all details.

Date Format

This value defines how dates are shown. Select one of the formats 'dd.MM.yyyy' or 'MM.dd.yyyy'.

Date Separator

This character is used to separate date elements (year, month and date).

Digit Grouping

This character is used to group digits in large currency values.

Message Pre-Processing

Use this replacement functionality if the file you are loading has special character sequences which must be replaced before the data can be processed. Example: To replace the sequence '#\$' by a 'new

USING INFO ZONE

line' activate the check box and set in the 'by-field' value '\n' (back slash and n).

SWIFT Standards Release

This defines the actual SWIFT Release that is used by the SWIFT parser. After November 2007 release 2007 should be used.

Default File Extension

This file extension is used to open SWIFT files for parsing. Only files with this extension will be presented within the selection list.

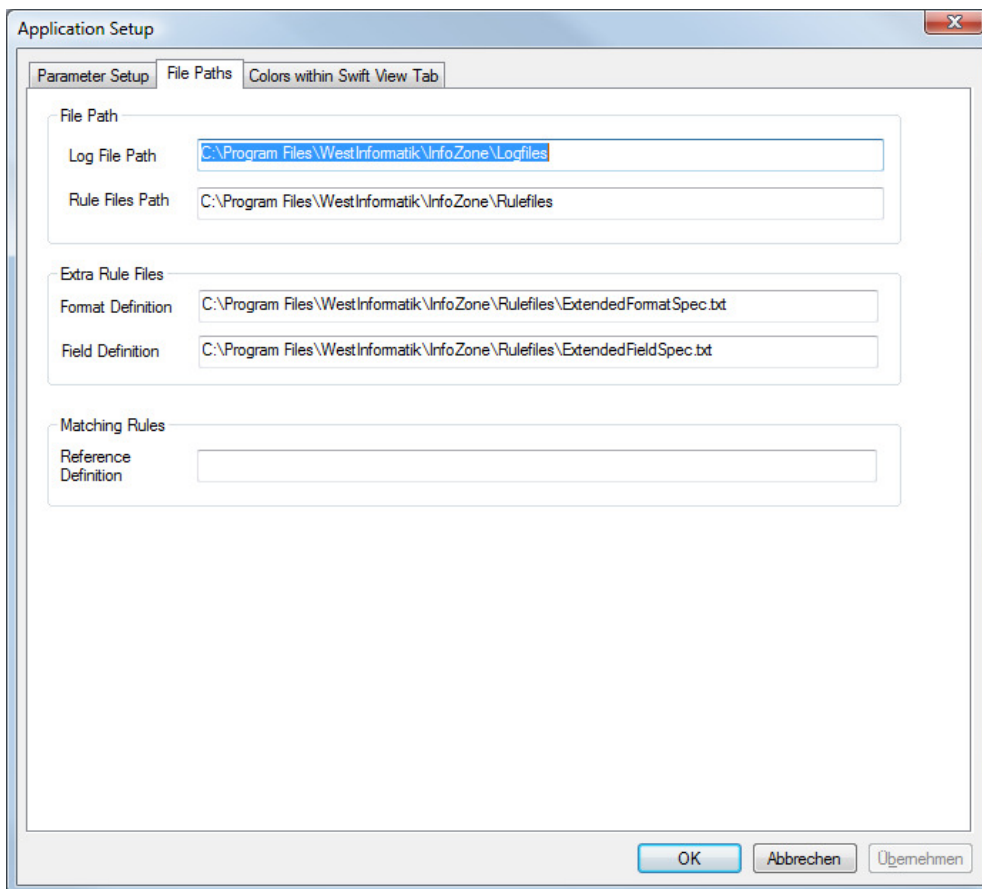
Load Filter

If this filter is activated only messages of defined type is loaded. All other messages type are ignored and skipped.

Load Limit

If this limit is activated only those maximum number of messages are loaded. All other messages are ignored and skipped.

File Path



Log File path

The application generates log files within this directory. This log files may be needed in case of an application problem.

Rule File Path

InfoZone is based on a parsing engine that uses rule files to process the SWIFT messages. If needed, rule files can be replaced by a new version without affecting the rest of the installation.

Extra Rule Files

As already mentioned under “Show Warnings” it is possible to extend the SWIFT syntax by user defined rules. The technique to implement such rules needs experience and we suggest that we define the extra rules for you. Should you decide to do it yourself please ask for extra documentation.

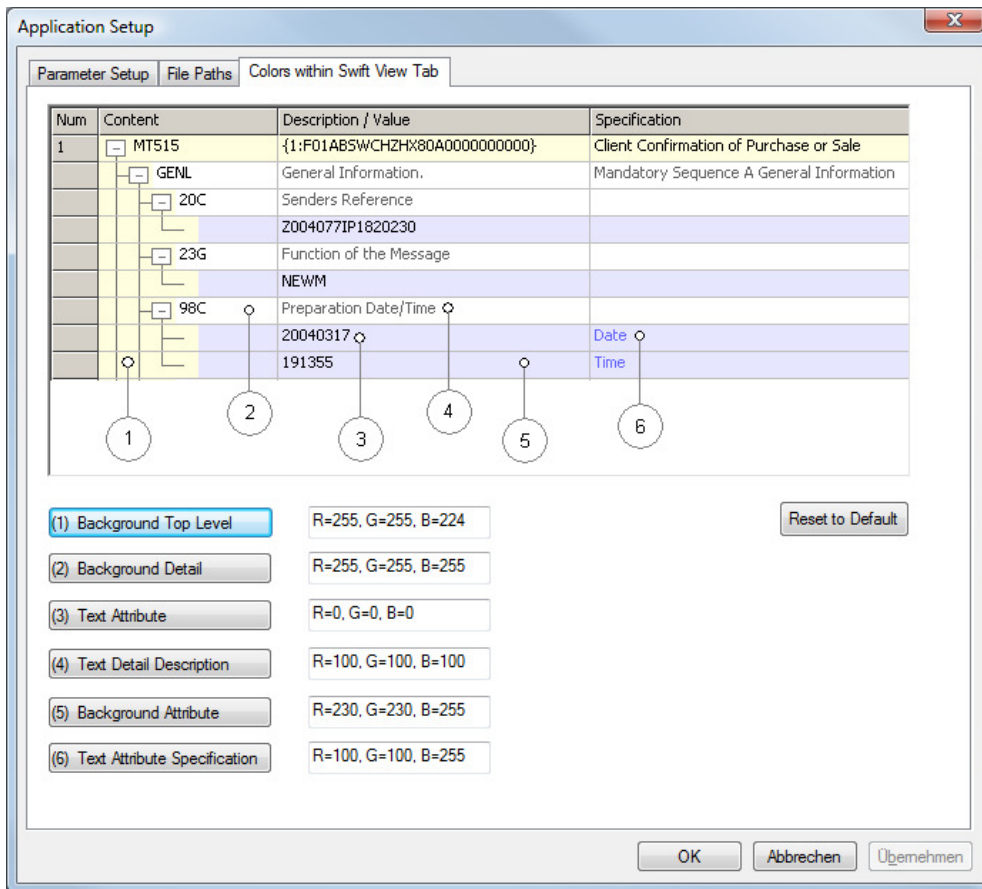
Matching Rules

Matching definitions is not supported with this version. So no path has to be defined here.

USING INFO ZONE

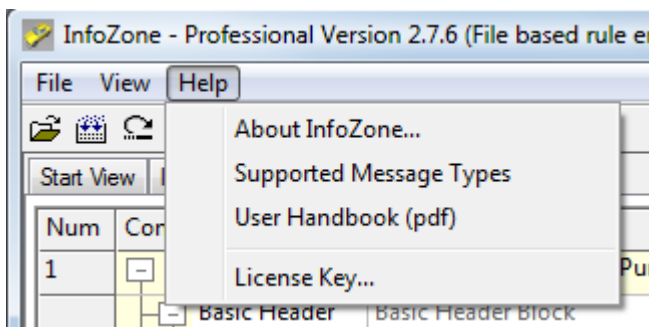
Color Setup Dialog

On application main menu select File/Color Setup to display the color dialog.



Click one of the buttons representing the shown color area. You can go back to default setting any time by using the button "Reset to Default".

Help Menu



This menu contains the about dialog, the list of supported messages, the user handbook and a dialog to manage the license key.

About InfoZone



This dialog shows the actual application version and the version of the loaded rule files. The build line contains the timestamp of the application build.

The license key line show the expiration date and type of the loaded license key.

Supported Message Types

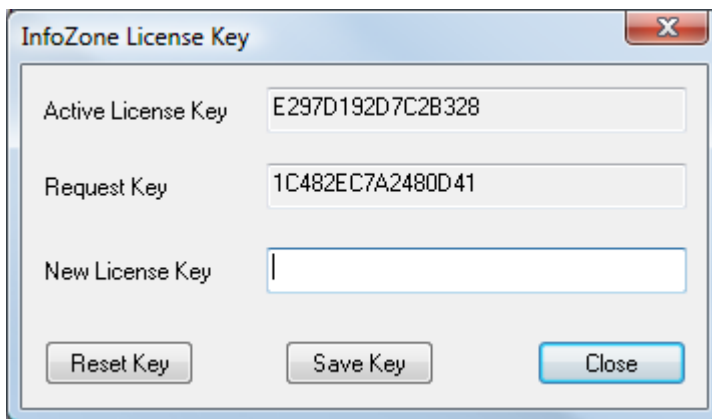


This is a list of 186 supported SWIFT message types.

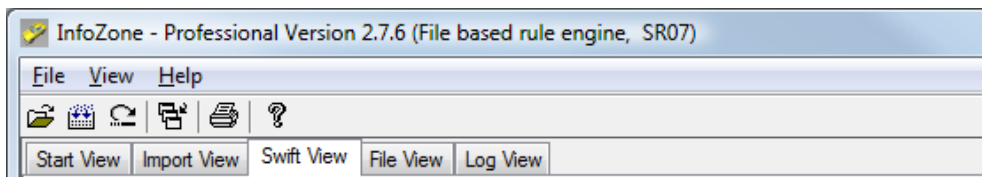
User Handbook

This command starts the PDF-Viewer or web browser and shows this handbook.

License Key



Use this dialog to manage your license key. After installation the application runs in demo mode. Open this dialog and send us the Request key as e-mail. According to your product contract we will generate a valid license key which is bound to your PC. Enter this new license key into the field "New License Key" and save it using the button "Save Key". After application restart you will notice the license type on the application title bar.



Application Support

If you have problems using this application contact us by e-mail. Send a problem description to support@westinformatik.ch.

If possible attach the latest log file. You will find it under the <installation directory>\Logfiles.